



Levers and Knobs

Levers and Knobs

Brass Levers and Knobs

Finger clearance is defined as the clearance between the lever and the base of the rose or plate at the centre of the lever. The tables below are calculated using an assembled plate/rose thickness of 12.5mm. Due to different bearing bush, the projection and finger clearance of levers in the 4800/5800 Series is 2.5mm larger than the value shown (except Lever 90).

For use on the following door furniture series:

- 1220 Series
- 1420 Series
- 1360 Series
- 1370 Series
- 1800 Series
- 2800 Series
- 4800 Series
- 5800 Series
- Artefact Series II Furniture

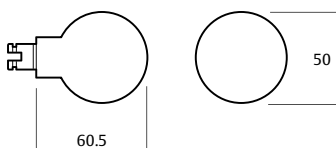
Knob 20

Dimensions

Diameter 50mm

Projection 73mm

Not compatible with Symphony roses



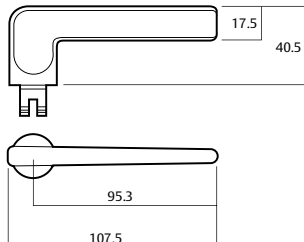
Lever 32

Dimensions

Length 107.5mm

Projection 53mm

Finger clearance 35.5mm



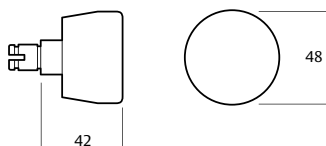
Knob 40

Dimensions

Diameter 48mm

Projection 54.5mm

Not compatible with Symphony roses



Intermezzo 41

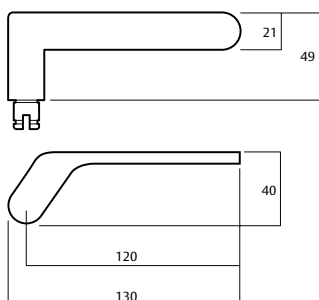
Dimensions

Length 130mm

Projection 61.5mm

Finger clearance 40.5mm

*Lever is an asymmetrical design and therefore must be handed.



Levers and Knobs

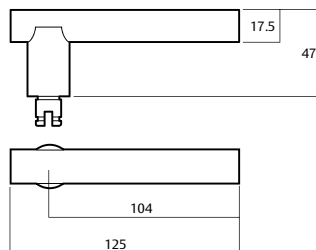
Brass Levers and Knobs



ASSA ABLOY

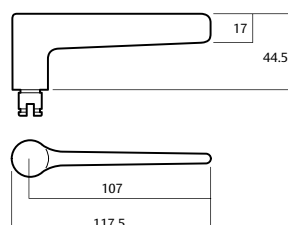
Arpeggio 44

Dimensions	
Length	125mm
Projection	59.5mm
Finger clearance	42mm



Sonata 45

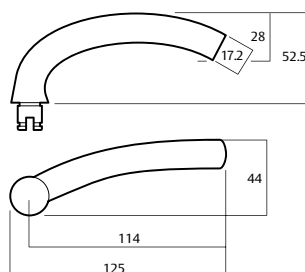
Dimensions	
Length	117.5mm
Projection	57mm
Finger clearance	40mm



Nocturne 48

Dimensions	
Length	125mm
Projection	65mm
Finger clearance	37mm

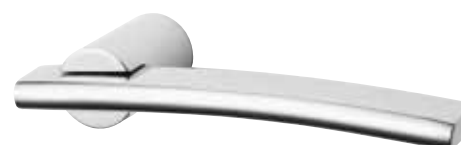
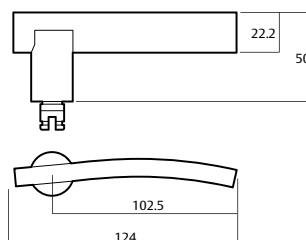
*Lever is an asymmetrical design and therefore must be handed.



Capella 50

Dimensions	
Length	124mm
Projection	62.5mm
Finger clearance	40.3mm

*Lever is an asymmetrical design and therefore must be handed.



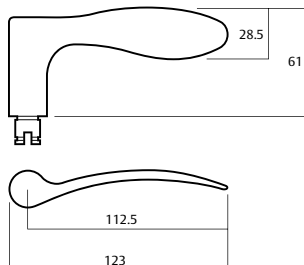
Levers and Knobs

Brass Levers and Knobs

Veloce 53

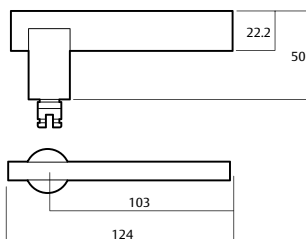
Dimensions	
Length	123mm
Projection	73.5mm
Finger clearance	45mm

*Lever is an asymmetrical design and therefore must be handed.



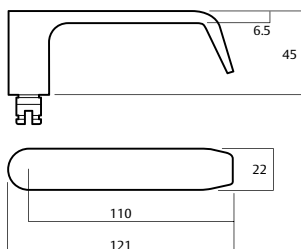
Lever 55

Dimensions	
Length	124mm
Projection	62.5mm
Finger clearance	40.3mm



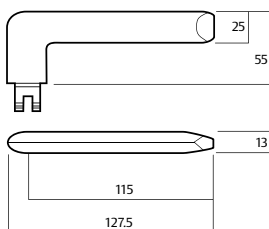
Overture 59

Dimensions	
Length	121mm
Projection	57.5mm
Finger clearance	51mm



Lever 62

Dimensions	
Length	127.5mm
Projection	67mm
Finger clearance	42mm



Levers and Knobs

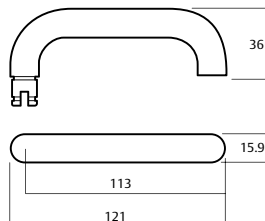
Brass Levers and Knobs



ASSA ABLOY

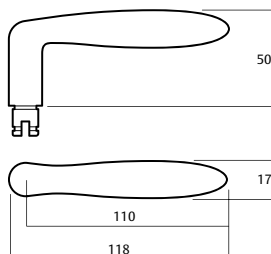
Lever 70

Dimensions	
Length	121mm
Projection	53.6mm
Finger clearance	37.7mm



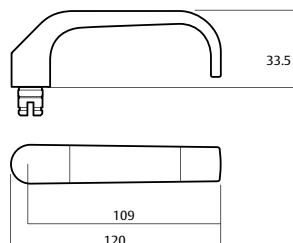
Tempo 71

Dimensions	
Length	118mm
Projection	62mm
Finger clearance	44.5mm



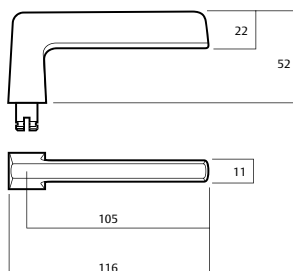
Ving 74

Dimensions	
Length	120mm
Projection	56mm
Finger clearance	48mm



Cadenza® 78

Dimensions	
Length	118mm
Projection	52mm
Finger clearance	30mm

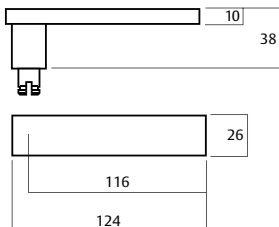


Levers and Knobs

Brass Levers and Knobs

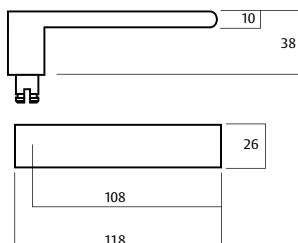
Tenor 79®

Dimensions	
Length	124mm
Projection	50.5mm
Finger clearance	40.5mm



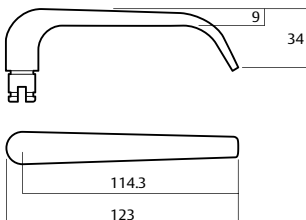
Lever 79B

Dimensions	
Length	118mm
Projection	50.5mm
Finger clearance	40.5mm



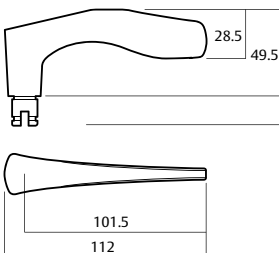
Lever 80

Dimensions	
Length	121mm
Projection	46.5mm
Finger clearance	37.5mm



Lever 83

Dimensions	
Length	112mm
Projection	62mm
Finger clearance	33.5mm

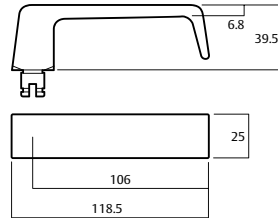


Levers and Knobs

Brass Levers and Knobs

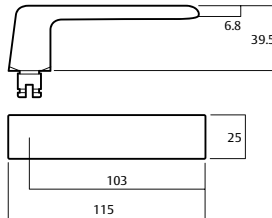
Lever 90

Dimensions	
Length	118.5mm
Projection	52mm
Finger clearance	45.2mm



Lever 91

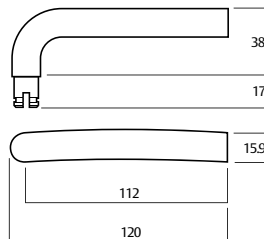
Dimensions	
Length	115mm
Projection	52mm
Finger clearance	45.2mm



Lever 94

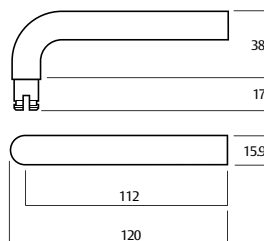
Dimensions	
Length	120mm
Projection	50.5mm
Finger clearance	34.6mm

*Lever is an asymmetrical design and therefore must be handed.



Chorus Line 97

Dimensions	
Length	120mm
Projection	50.5mm
Finger clearance	34.6mm



Levers and Knobs

Diecast Levers

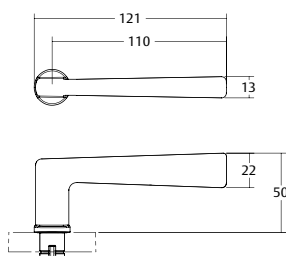
For use on the following door furniture series:

- Daintree Series
- Palladium
- Velocity (Levers L1, L2, L3 and L4 only)
- Nexion Locksets

Hakea® #28

Dimensions	
Length	121mm
Projection	62mm
Finger clearance	42mm

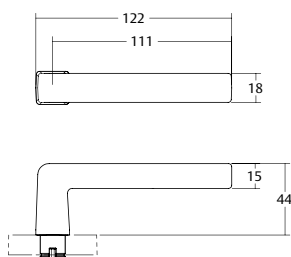
*Design Registered Australia/New Zealand



Acacia® #29

Dimensions	
Length	122mm
Projection	56mm
Finger clearance	41mm

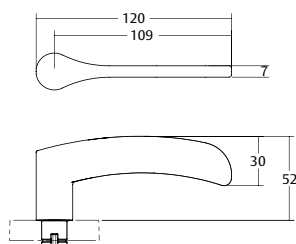
*Design Registered Australia/New Zealand



Saltbush® #34

Dimensions	
Length	120mm
Projection	64mm
Finger clearance	41mm

*Design Registered Australia/New Zealand



Levers and Knobs

Diecast Levers

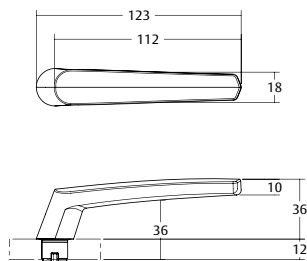


ASSA ABLOY

Aria® #S27

Dimensions	
Length	123mm
Projection	48mm
Finger clearance	36mm

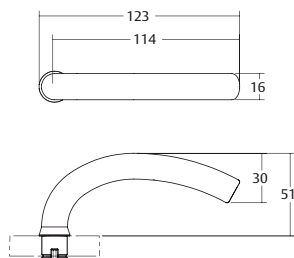
*Design Registered Australia/New Zealand



Mulga® #36

Dimensions	
Length	123mm
Projection	63mm
Finger clearance	47mm

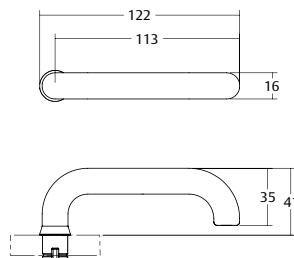
*Design Registered Australia/New Zealand



Gidgee® #37

Dimensions	
Length	122mm
Projection	53mm
Finger clearance	37mm

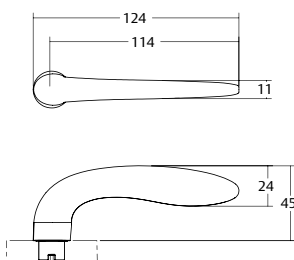
*Design Registered Australia/New Zealand



Summit® #L1

Dimensions	
Length	124mm
Projection	57mm
Finger clearance	37mm

*Design Registered Australia/New Zealand



Levers and Knobs

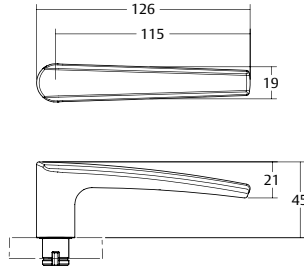
Diecast Levers

Spire® #L2

Dimensions

Length	126mm
Projection	57mm
Finger clearance	41mm

*Design Registered Australia/New Zealand

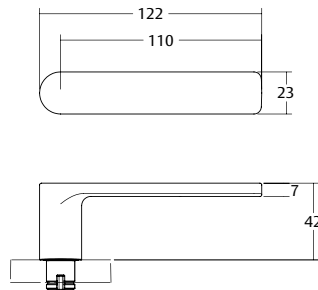


Element™ #L3

Dimensions

Length	122mm
Projection	54mm
Finger clearance	47mm

*Design Registered Australia/New Zealand

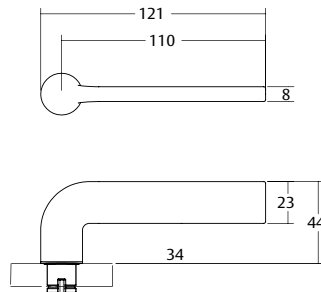


Glide™ #L4

Dimensions

Length	121mm
Projection	56mm
Finger clearance	34mm

*Design Registered Australia/New Zealand



ASSA ABLOY is the global leader in door opening solutions, dedicated to satisfying end-user needs for security, safety and convenience



Lockwood is the leading brand in the Australian locking industry. With an established reputation for high quality products, this iconic brand provides a wide range of locking solutions to residential housing, commercial building and industrial application markets. Lockwood is supported by an extensive distribution and after-sales support network. Our customers include retailers, architects, trade and industrial personnel, locksmiths and security dealers.

ASSA ABLOY

ASSA ABLOY is the global leader in door opening solutions, dedicated to satisfying end-user needs for security, safety and convenience.

ASSA ABLOY is represented in all major regions, in both mature and emerging markets, with leading positions in Australia, Europe and North America.

As the world's leading lock group, ASSA ABLOY offers a more complete product range of door opening solutions than any other company in the market.

Australia
1300 LOCK UP (1300 562 587)
lockweb.com.au

New Zealand
+64 9415 7111
assaabloy.co.nz

ASSA ABLOY Australia Pty Ltd
235 Huntingdale Road
Oakleigh, Victoria, 3166
Australia

info.au@assaabloy.com
assaabloy.com.au

ASSA ABLOY New Zealand Ltd
6 Armstrong Road
Albany, North Shore City, 0632
New Zealand

info.nz@assaabloy.com
assaabloy.co.nz

